

Flush mounted installation box

Part no. 41404

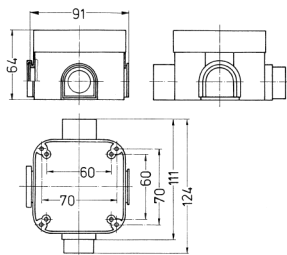


- for Cepex CEE sockets 16 A and 32 A and Cepex sockets SCHUKO®
- can be combined with all Cepex panel mounted sockets

Technical specifications

| | |
|--------|------|
| Weight | 93 g |
|--------|------|

Drawing



Drawing
1 MB 334
Dim. in mm