

EverGUM combination unit

Part no. 71064

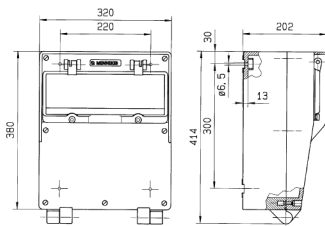


- solid rubber enclosure, signal yellow RAL 1003
- pre-wired for installation

Technical specifications

CEE 32 A, 5 p, 400 V	1
CEE 16 A, 5 p, 400 V	2
SCHUKO® 16 A, 230 V	4
Fusing	<ul style="list-style-type: none"> • 1 RCD 63 A, 4 p, 0.03 A • 1 MCB 32 A, 3 p, C • 2 MCB's 16 A, 3 p, C • 2 MCB's 16 A, 1 p, B
Pre-fuse max.	63 A
InA	48 A
RDF	0.5
Connection / feeder cable	<ul style="list-style-type: none"> • for 2 cables up to 5 x 25 mm²
Protection type	IP 44
Enclosure material	Solid rubber
Weight	11000 g
Height	380 mm
Width	320 mm

Drawing



Drawing
5 MB 41

Dim. in mm