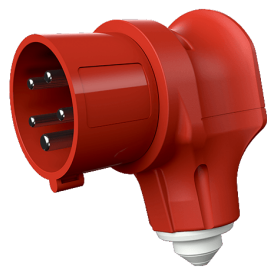


Phase inverter VarioTOP
Part no. 859



- screw terminals
- cable entry hood rotating up to 60° to the left or the right
- with grommet
- cable entry hood in colour code red
- especially suited for use with sockets of the Cepex range

Technical specifications

Ampere	16 A
Poles	5 p
Voltage	400 V
Clock position	6 h
Hertz	50-60 Hz
Connection technology	Screw terminals
Contact	nickel plated contacts
Protection type	IP 44
Weight	182 g
Declaration of Conformity	EAC, CQC

Drawing

