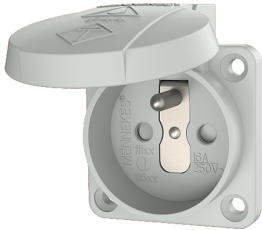


## Grounding-type panel mounted socket

Part no. 11160



- French-belgian standard
- with hinged lid
- 3 plug-in terminals as connecting terminals for 1.5 - 2.5 mm<sup>2</sup>
- other colours on request

## Technical specifications

|                           |                   |
|---------------------------|-------------------|
| Ampere                    | 16 A              |
| Poles                     | 2 p+E             |
| Voltage                   | 230 V             |
| Connection technology     | Plug-in terminals |
| Contact                   | standard          |
| Protection type           | IP 44             |
| Shutter                   | true              |
| Flange                    | 50x50 mm          |
| Fixing hole               | 38x38 mm          |
| Weight                    | 43 g              |
| Declaration of Conformity | EAC               |

## Drawing



Drawing  
1 MB 410  
Dim. in mm