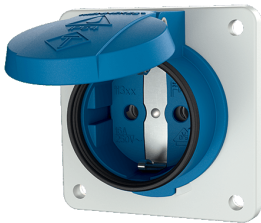


## Panel mounted socket SCHUKO®

Part no. 11331F

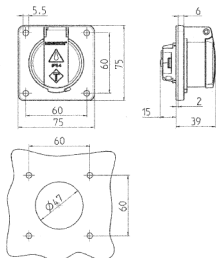


- for portable use
- with front gasket
- with hinged lid
- for easy installation in a cable duct or an enclosure
- 3 screw terminals as connecting terminals 1.5 – 2.5 mm<sup>2</sup>

## Technical specifications

Ampere	16 A
Poles	2 p+E
Voltage	230 V
Connection technology	Screw terminals
Contact	standard
Protection type	IP 54
Shutter	false
Flange	75x75 mm
Fixing hole	60x60 mm
Weight	80 g

## Drawing



Drawing  
1 MB 592  
Dim. in mm