

**Panel mounted socket SCHUKO®**  
Part no. 11332

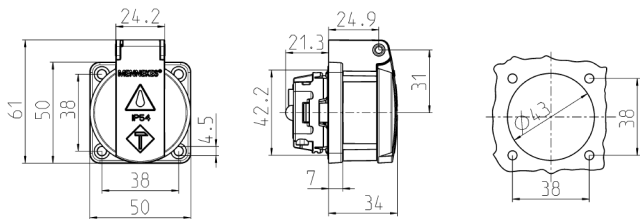


- for portable use
- with front gasket
- with hinged lid
- 3 screw terminals as connecting terminals for 1.5 – 2.5 mm²
- other colours on request

Technical specifications

Ampere	16 A
Poles	2 p+E
Voltage	230 V
Connection technology	Screw terminals
Contact	standard
Protection type	IP 54
Shutter	false
Flange	50x50 mm
Fixing hole	38x38 mm
Weight	50 g
Declaration of Conformity	VDE, EAC

Drawing



Drawing  
1 MB 5861  
Dim. in mm