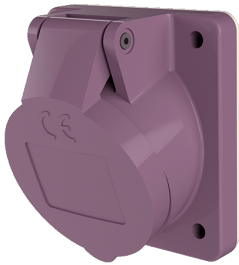


## Panel mounted socket

Part no. 1271

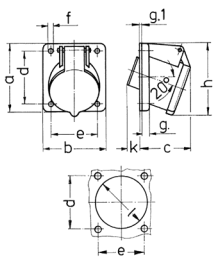


- screw terminals
- 20° inclination

## Technical specifications

Ampere	32 A
Poles	2 p
Voltage	20-25 V
Hertz	50-60 Hz
Connection technology	Screw terminals
Contact	standard
Protection type	IP 44
Flange	68x62 mm
Fixing hole	47x47 mm
Weight	125 g
Declaration of Conformity	EAC

## Drawing



Drawing 1 MB 231	Amp. Poles	16		32	
		2	3	2	3
Dim. in mm	a	68	68	68	68
	b	62	62	62	62
	c	42	42	42	42
	d	53	53	53	53
	e	47	47	47	47
	f	4.5	4.5	4.5	4.5
	g	8	8	8	8
	g.1	2	2	2	2
	h	72	72	72	72
	k	32	32	32	32
	l	55	55	55	55
Terminal for cond. cross section (mm <sup>2</sup> ) min.-max.		4	4	4	4
		-10	-10	-10	-10