

Panel mounted socket with TwinCONTACT
Part no. 1404

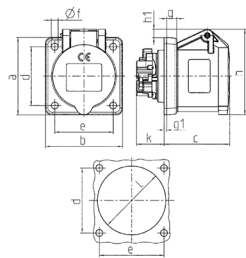


- screwless spring terminals
- suitable for through wiring
- straight

Technical specifications

Ampere	16 A
Poles	4 p
Voltage	50-500 V
Clock position	10 h
Hertz	100-300 Hz
Connection technology	Screwless - TwinCONTACT
Contact	standard
Protection type	IP 44
Flange	72x65 mm
Fixing hole	52x52 mm
Weight	120 g
Declaration of Conformity	EAC

Drawing



Drawing	Amp.	16		
1 MB 649	Poles	3	4	5
Dim. in mm	a	62	72	72
	b	62	65	65
	c	54	54	54
	d	47	52	52
	e	47	52	52
	f	5,5	5,5	5,5
	g	8	8	8
	g1	2	2	2
	h	68	77	85
	h1	7	7	11
	k	23	23	23
	l	50	52	57
Terminal for cond. cross		1,5	1,5	1,5
section (mm²) min-max.		—4	—4	—4