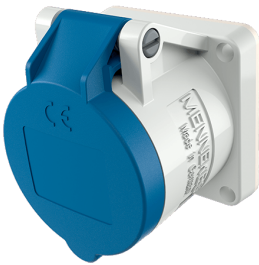


## Panel mounted socket with TwinCONTACT

Part no. 1619

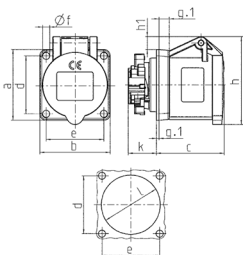


- screwless spring terminals
- suitable for through wiring
- small flange dimensions
- straight

### Technical specifications

Ampere	16 A
Poles	3 p
Voltage	230 V
Clock position	6 h
Hertz	50-60 Hz
Connection technology	Screwless - TwinCONTACT
Contact	standard
Protection type	IP 44
Flange	55x55 mm
Fixing hole	45x45 mm
Weight	100 g
Declaration of Conformity	VDE, EAC

### Drawing



Drawing	Amp.	16
1 MB 648	Poles	3
Dim. in mm	a	55
	b	55
	c	54
	d	45
	e	45
	f	5.5
	g	8
	g-1	2
	h	70
	h1	12
	k	22
	l	47
	Terminal for cond. cross section (mm <sup>2</sup> ) min.-max.	1.5