

Panel mounted socket SCHUKO® TM

Part no. 17021

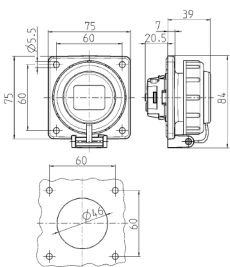


- screw terminals
- bayonet lock lid attached by a strap
- rectangular flange
- (form AS)
- connecting protective caps, part no. 19027706, available on request

Technical specifications

Ampere	16 A
Poles	2 p+E
Voltage	230 V
Connection technology	Screw terminals
Contact	standard
Protection type	IP 68
Shutter	false
Flange	75x75 mm
Fixing hole	60x60 mm
Weight	110 g
Declaration of Conformity	VDE, EAC

Drawing



Drawing
1 MB 628

Dim. in mm