

Panel mounted socket SCHUKO®

Part no. 17038

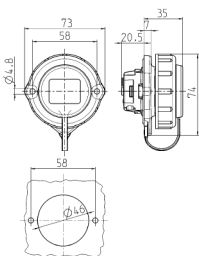


- screw terminals
- bayonet lock lid attached by a strap
- oval flange
- two fixing holes

Technical specifications

Ampere	16 A
Poles	2 p+E
Voltage	230 V
Connection technology	Screw terminals
Contact	standard
Protection type	IP 68
Shutter	false
Weight	93 g
Declaration of Conformity	VDE

Drawing



Drawing
1 MB 629
Dim. in mm