

**Grounding-type panel mounted socket**  
Part no. 17064

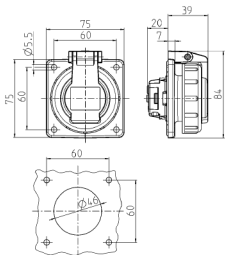


- screw terminals or plug-in terminals
- hinged bayonet lock lid
- rectangular flange
- four fixing holes

**Technical specifications**

Ampere	16 A
Poles	2 p+E
Voltage	230 V
Connection technology	Screw terminals
Contact	standard
Protection type	IP 68
Shutter	true
Flange	75x75 mm
Fixing hole	60x60 mm
Weight	107 g
Declaration of Conformity	EAC

**Drawing**



Drawing  
1 MB 627

Dim. in mm