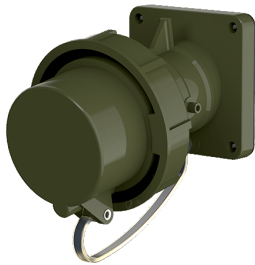


Panel mounted inlet TM

Part no. 23249

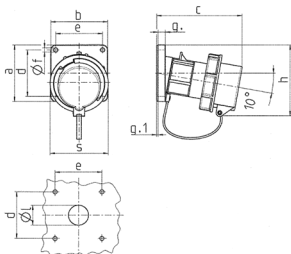


- screw terminals
- highly heat resistant contact carrier
- nickel plated contacts
- with protective cap
- (form BP)

Technical specifications

Ampere	32 A
Poles	3 p
Voltage	230 V
Clock position	6 h
Hertz	50-60 Hz
Connection technology	Screw terminals
Contact	nickel plated contacts, highly heat resistant contact carrier
Protection type	IP 67
Weight	314 g
Declaration of Conformity	VDE, EAC

Drawing



Drawing	Amp.	16			32			63		
		Poles			3	4	5	3	4	5
2 MB 62										
Dim. in mm										
a		85	85	85	85	85	108	108	108	
b		85	85	85	85	85	101	101	101	
c		132	132	131	131	137	164	164	164	
d		70	70	70	70	70	85	85	85	
e		70	70	70	70	70	77	77	77	
f		6.3	6.3	6.3	6.3	6.3	6.5	6.5	6.5	
g.		11	11	11	11	11	12	12	12	
g.1		2	2	2	2	2	2	2	2	
h		100	107	108	108	111	130	130	130	
s		70	87	94	94	102	114	114	114	
l		30	30	30	30	30	40	40	40	
Terminal for cond. cross section (mm ²) min.-max.		1	1	2,5	2,5	2,5	6	6	6	
		-2,5	-2,5	-6	-6	-6	-16	-16	-16	