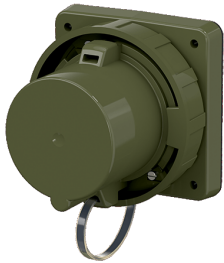


Panel mounted inlet TM

Part no. 23433

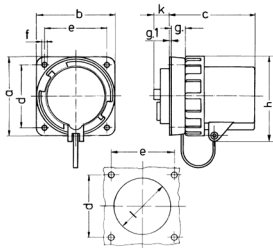


- screw terminals
- highly heat resistant contact carrier
- nickel plated contacts
- with protective cap (form AP)

Technical specifications

Ampere	125 A
Poles	5 p
Voltage	400 V
Clock position	6 h
Hertz	50-60 Hz
Connection technology	Screw terminals
Contact	highly heat resistant contact carrier
Protection type	IP 67
Weight	1274 g

Drawing



Drawing	Amp.	125
2 MB 206	Poles	5
Dim. in mm	a	130
	b	130
	c	120
	d	104
	e	104
	f	6.5
	g.	18
	g.1	2
	h	131
	k	28
	l	95
Terminal for cond. cross section (mm ²) min.-max.		25 —70