

Panel mounted socket

Part no. 2443

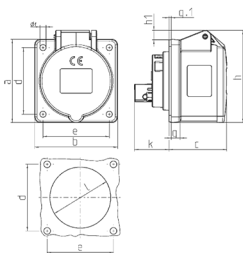


- screw terminals
- highly heat resistant contact carrier
- nickel plated contacts
- straight

Technical specifications

| | |
|---------------------------|---|
| Ampere | 16 A |
| Poles | 7 p |
| Voltage | 400 V |
| Clock position | 6 h |
| Hertz | 50-60 Hz |
| Connection technology | Screw terminals |
| Contact | highly heat resistant contact carrier, nickel plated contacts |
| Protection type | IP 44 |
| Flange | 75x75 mm |
| Fixing hole | 60x60 mm |
| Weight | 198 g |
| Declaration of Conformity | EAC |

Drawing



| Drawing | Amp. | 16 | 32 |
|---|-------|--------|---------|
| 1 MB 247 | Poles | 7 | 7 |
| Dim. in mm | a | 75 | 85 |
| | b | 75 | 75 |
| | c | 53 | 65 |
| | d | 60 | 60 |
| | e | 60 | 60 |
| | f | 5.5 | 5.5 |
| | g | 8 | 8 |
| | g-1 | 2 | 2 |
| | h | 83 | 100 |
| | h1 | 8 | 12 |
| | k | 32 | 39 |
| | l | 54 | 62 |
| Terminal for cond. cross section (mm ²) min.-max. | | 1.5 —4 | 2.5 —10 |