

Panel mounted socket TM

Part no. 24640

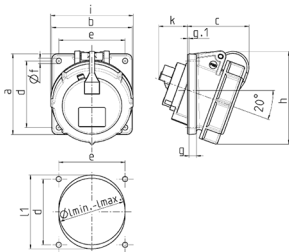


- screw terminals
- highly heat resistant contact carrier
- nickel plated contacts
- 20° inclination
- (form BS)

Technical specifications

Ampere	16 A
Poles	5 p
Voltage	400 V
Clock position	6 h
Hertz	50-60 Hz
Connection technology	Screw terminals
Contact	highly heat resistant contact carrier, nickel plated contacts
Protection type	IP 67
Flange	85x85 mm
Fixing hole	70x70 mm
Inclination	20 °
Weight	233 g
Declaration of Conformity	VDE, EAC

Drawing



Drawing 1MB 474	Amp. Pole	16		32		63	
		3	5	3/4	5	3/4/5	
Dim. in mm	a	85	85	85	85	114	
	b	85	85	85	85	114	
	c	71	65	65	80	98	
	d	70	70	70	70	90	
	e	70	70	70	70	90	
	f	5.5	5.5	5.5	5.5	5.5	
	g	8	8	8	8	12	
	g.1	2	2	2	2	2	
	h	92	98	101	115	135	
	i	70	87	94	101	112	
	k	39	33	53	53	70	
	l min.	57	70	78	78	92	
	l max.	78	78	78	78	105	
	l1	—	—	—	—	105	
Terminal for cond. cross section (mm ²) min.-max.		1.5	1.5	2.5	2.5	6	
		-4	-4	-10	-10	-25	