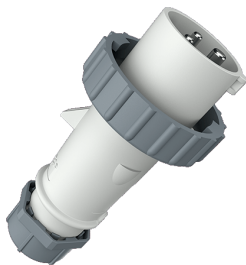


Plug AM-TOP®
Part no. 2930

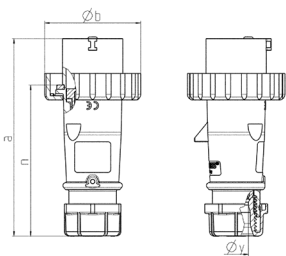


- screw terminals
- single part body
- cable gland and sealing
- strain relief and protection against kinking

Technical specifications

| | |
|---------------------------|-----------------|
| Ampere | 16 A |
| Poles | 3 p |
| Voltage | 250 V |
| Clock position | 8 h |
| Connection technology | Screw terminals |
| Contact | standard |
| Protection type | IP 67 |
| Weight | 133 g |
| Declaration of Conformity | EAC, CQC |

Drawing



| Drawing 2 MB 218 | Amp. Poles | 16 | | | 32 | | |
|--------------------------|---------------|------|------|------|-----|-----|-----|
| | | 3 | 4 | 5 | 3 | 4 | 5 |
| Dim. in mm | a | 142 | 144 | 147 | 186 | 186 | 180 |
| | b | 70 | 78 | 87 | 94 | 94 | 101 |
| | n | 109 | 111 | 114 | 145 | 145 | 138 |
| | y | 14.5 | 16 | 16 | 22 | 22 | 22 |
| Terminal for cond. cross | | 1 | 1 | 1 | 2.5 | 2.5 | 2.5 |
| section (mm²) min.-max. | | —2.5 | —2.5 | —2.5 | —6 | —6 | —6 |