

**Panel mounted socket**  
Part no. 3222

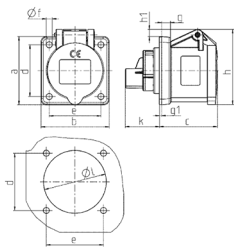


- screw terminals
- straight

**Technical specifications**

Ampere	16 A
Poles	4 p
Voltage	Isolating transformer
Clock position	12 h
Connection technology	Screw terminals
Contact	standard
Protection type	IP 44
Flange	72x65 mm
Fixing hole	52x52 mm
Weight	148 g
Declaration of Conformity	EAC

**Drawing**



Drawing		16			
1 MB 259		Amp.	3	4	5
Dim. in mm		Poles			
	a	62	72	72	
	b	62	65	65	
	c	54	54	54	
	d	47	52	52	
	e	47	52	52	
	f	5.5	5.5	5.5	
	g	8	8	8	
	g1	2	2	2	
	h	68	77	85	
	h1	7	7	11	
	k	32	32	32	
	l	50	52	57	
Terminal for cond. cross			1.5	1.5	1.5
section (mm <sup>2</sup> ) min.-max.			—4	—4	—4