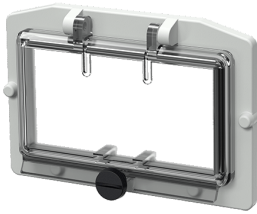


## Hinged window

Part no. 40871

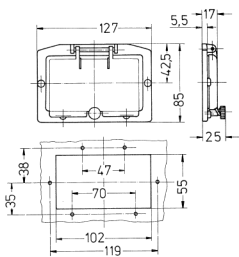


- without protective cover
- with knurled screws
- frame colour electric grey
- window smoked glass
- IP 44

## Technical specifications

|                           |      |
|---------------------------|------|
| Weight                    | 68 g |
| Declaration of Conformity | EAC  |

## Drawing



Drawing  
6 MB 4  
Dim. in mm