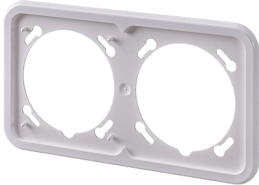


Cepex masking frame

Part no. 41424

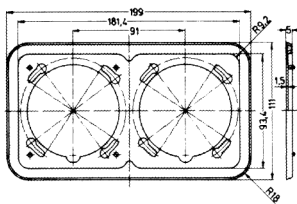


- double
- matching all Cepex flush mounted and panel mounted 16 A and 32 A sockets, for the installation of single appliances and for vertical combination of any number of sockets

Technical specifications

Weight	30 g
Declaration of Conformity	EAC

Drawing



Drawing
1 MB 364
Dim. in mm