

Panel mounted inlet
Part no. 438

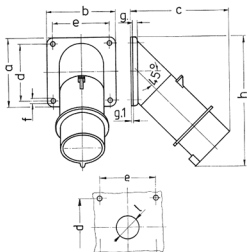


- screw terminals

Technical specifications

Ampere	32 A
Poles	4 p
Voltage	400 V
Clock position	6 h
Hertz	50-60 Hz
Connection technology	Screw terminals
Contact	standard
Protection type	IP 44
Weight	242 g
Declaration of Conformity	EAC

Drawing



Drawing 2 MB 39 Dim. in mm	Amp. Poles	16		32	
		5	3	4	5
a		85	85	85	85
b		85	85	85	85
c		122	126	126	129
d		70	70	70	70
e		70	70	70	70
f		6.2	6.2	6.2	6.2
g		6	6	6	6
g.1		2	2	2	2
h		161	163	163	170
l		30	30	30	30
Terminal for cond. cross section (mm²) min.-max.		1 —2,5	2.5 —6	2.5 —6	2.5 —6