

Panel mounted inlet
Part no. 461

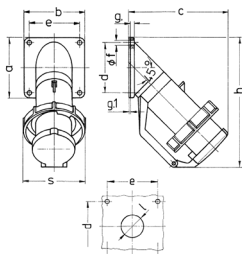


- screw terminals
- with hinged lid

Technical specifications

Ampere	16 A
Poles	5 p
Voltage	230 V
Clock position	9 h
Hertz	50-60 Hz
Connection technology	Screw terminals
Contact	standard
Protection type	IP 67
Weight	320 g
Declaration of Conformity	EAC

Drawing



Drawing	Amp. Poles	16		32			63		
		5	3	4	5	4	5		
Dim. in mm									
a	b	85	85	85	85	114	114		
	b	85	85	85	85	114	114	114	114
c	d	141	141	141	144	180	180		
	d	70	70	70	70	90	90		
e	f	70	70	70	70	90	90		
f	g	6.2	6.2	6.2	6.2	6.2	6.2		
g	g	6	6	6	6	6	6		
g.1	h	2	2	2	2	2	2		
h	s	181	181	181	188	242	242		
s	l	86	93	93	100	113	113		
l		30	30	30	30	40	40		
Terminal for cond. cross		1	2.5	2.5	2.5	4	4		
section (mm²) min.-max.		—2.5	—6	—6	—6	—16	—16		