

Panel mounted inlet
Part no. 476

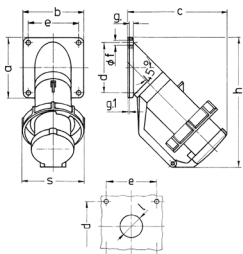


- screw terminals
- with hinged lid

Technical specifications

Ampere	63 A
Poles	4 p
Voltage	230 V
Clock position	9 h
Hertz	50-60 Hz
Connection technology	Screw terminals
Contact	standard
Protection type	IP 67
Weight	748 g
Declaration of Conformity	EAC

Drawing



Drawing	Amp. Poles	16		32		63	
		5	3	4	5	4	5
Dim. in mm							
a	85	85	85	85	114	114	
b	85	85	85	85	114	114	
c	141	141	141	144	180	180	
d	70	70	70	70	90	90	
e	70	70	70	70	90	90	
f	6.2	6.2	6.2	6.2	6.2	6.2	
g	6	6	6	6	6	6	
g.1	2	2	2	2	2	2	
h	181	181	181	188	242	242	
s	86	93	93	100	113	113	
l	30	30	30	30	40	40	
Terminal for cond. cross	1	2.5	2.5	2.5	4	4	
section (mm²) min.-max.	—2.5	—6	—6	—6	—16	—16	