

## Cepex panel mounted socket SCHUKO®

Part no. 4981

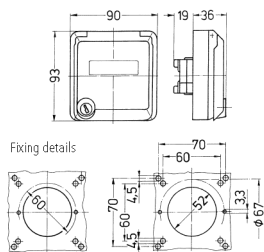


- alpine white or pearl white
- screw terminals
- with labelling field
- with safety lock
- two keys
- cannot be dismantled when locked
- on request with identical locks
- suitable for installation in cable ducts and columns

### Technical specifications

|                           |          |
|---------------------------|----------|
| Ampere                    | 16 A     |
| Poles                     | 3 p+E    |
| Voltage                   | 230 V    |
| Hertz                     | 50-60 Hz |
| Protection type           | IP 44    |
| Shutter                   | false    |
| Weight                    | 150 g    |
| Declaration of Conformity | EAC      |

### Drawing



Drawing  
1 MB 305  
Dim. in mm