

Wall mounted socket
Part no. 5613A

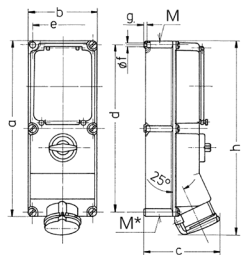


- screw terminals
- **X-CONTACT**
- switched
- mechanical DUO-interlock
- DIN rail
- sockets can be padlocked

Technical specifications

| | |
|---------------------------|-----------------|
| Ampere | 16 A |
| Poles | 5 p |
| Voltage | 400 V |
| Clock position | 6 h |
| Hertz | 50-60 Hz |
| Connection technology | Screw terminals |
| Contact | standard |
| Protection type | IP 44 |
| Enclosure material | Plastic |
| Weight | 2205 g |
| Declaration of Conformity | EAC, CQC |

Drawing



| Drawing 1 MB 208 | Amp. Poles | 16 | | | 32 | | 63 | |
|--------------------------|---------------|-------|-------|-------|-------|-------|------|------|
| | | 3 | 4 | 5 | 4 | 5 | 4 | 5 |
| Dim. in mm | a | 364 | 364 | 364 | 364 | 364 | 460 | 460 |
| | b | 134 | 134 | 134 | 134 | 134 | 180 | 180 |
| | c | 160 | 162 | 163 | 168 | 168 | 195 | 195 |
| | d | 347 | 347 | 347 | 347 | 347 | 440 | 440 |
| | e | 117 | 117 | 117 | 117 | 117 | 160 | 160 |
| | f | 6.3 | 6.3 | 6.3 | 6.3 | 6.3 | 8.1 | 8.1 |
| | g | 8 | 8 | 8 | 8 | 8 | 8 | 8 |
| | h | 391 | 395 | 398 | 408 | 411 | 502 | 502 |
| | M | 32/40 | 32/40 | 32/40 | 32/40 | 32/40 | 40 | 40 |
| | M* | 2x32 | 2x32 | 2x32 | 2x32 | 2x32 | 2x40 | 2x40 |
| Max. cable diam. (mm) | | 27 | 27 | 27 | 27 | 27 | 27 | 27 |
| Terminal for cond. cross | | 1.5 | 1.5 | 1.5 | 2.5 | 2.5 | 6 | 6 |
| section (mm²) min.-max. | | —4 | —4 | —4 | —10 | —10 | —25 | —25 |