

Socket for through wiring

Part no. 5756

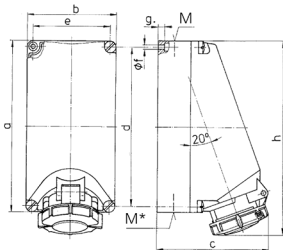


- screw terminals
- suitable for through wiring
- with fixing points for terminal strip part no. 40113

Technical specifications

| | |
|---------------------------|-----------------|
| Ampere | 32 A |
| Poles | 4 p |
| Voltage | 230 V |
| Clock position | 9 h |
| Hertz | 50-60 Hz |
| Connection technology | Screw terminals |
| Contact | standard |
| Protection type | IP 67 |
| Weight | 770 g |
| Declaration of Conformity | EAC, CQC |

Drawing



| Drawing 1 MB 206 | Amp. Poles | 16 | | | 32 | | |
|---------------------|--|---------------|------|------|---------------|------|------|
| | | 3 | 4 | 5 | 3 | 4 | 5 |
| Dim. in mm | a | 225 | 225 | 225 | 225 | 225 | 225 |
| | b | 118 | 118 | 118 | 118 | 118 | 118 |
| | c | 144 | 150 | 152 | 155 | 155 | 159 |
| | d | 208 | 208 | 208 | 208 | 208 | 208 |
| | e | 101 | 101 | 101 | 101 | 101 | 101 |
| | f | 6.3 | 6.3 | 6.3 | 6.3 | 6.3 | 6.3 |
| | g | 8 | 8 | 8 | 8 | 8 | 8 |
| | h | 249 | 251 | 253 | 255 | 253 | 259 |
| | M | 1x25 and 1x32 | | | 1x25 and 1x32 | | |
| | M* | 2x25 | 2x25 | 2x25 | 2x25 | 2x25 | 2x25 |
| | Max. cable diam. (mm) | 25 | 25 | 25 | 25 | 25 | 25 |
| | Terminal for cond. cross section (mm ²) min-max. | 1.5 | 1.5 | 1.5 | 2.5 | 2.5 | 2.5 |
| | | -4 | -4 | -4 | -10 | -10 | -10 |