

Wall mounted socket

Part no. 591

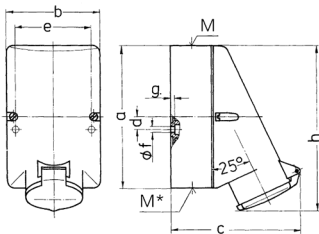


- screw terminals
- internal fixing
- one cable entry at top and two blind entries (can be cut out) at bottom
- lower part of enclosure base can be turned 180°

Technical specifications

Ampere	32 A
Poles	2 p
Voltage	40-50 V
Clock position	12 h
Hertz	50-60 Hz
Connection technology	Screw terminals
Contact	standard
Protection type	IP 44
Weight	260 g
Declaration of Conformity	EAC, CQC

Drawing



Drawing 1 MB 137	Amp. Poles	16		32	
		2	3	2	3
Dim. in mm	a	128	128	128	128
	b	84	84	84	84
	c	120	120	120	120
	d	11	11	11	11
	e	68	68	68	68
	f	5.3	5.3	5.3	5.3
	g	4	4	4	4
	h	146	146	146	146
	M	25	25	32	32
	M*	2x25 (blind) to be cut out		2x25 (blind) to be cut out	
	Max. cable diam. (mm)	18	18	25	25
	Terminal for cond. cross section (mm ²) min.-max.	4	4	4	4
		-2x6	-10	-2x6	-10