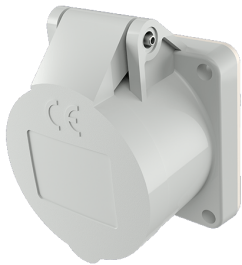


Panel mounted socket

Part no. 609

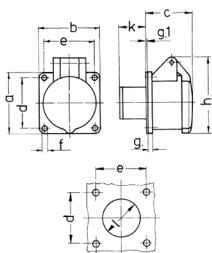


- screw terminals straight

Technical specifications

Ampere	16 A
Poles	2 p
Voltage	50 V
Clock position	10 h
Connection technology	Screw terminals
Contact	standard
Protection type	IP 44
Flange	55x55 mm
Fixing hole	45x45 mm
Weight	108 g
Declaration of Conformity	EAC, CQC

Drawing



Drawing 1 MB 136	Amp. Poles	16		32	
		2	3	2	3
Dim. in mm	a	55	55	55	55
	b	55	55	55	55
	c	44	44	44	44
	d	45	45	45	45
	e	45	45	45	45
	f	4.2	4.2	4.2	4.2
	g	8	8	8	8
	g.1	2	2	2	2
	h	67	67	67	67
	k	22	22	22	22
	l	34	34	34	34
Terminal for cond. cross section (mm ²) min.-max.		4	4	4	4
		-10	-10	-10	-10