

Connector
Part no. 682A

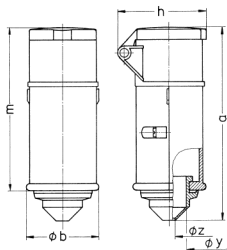


- screw terminals
- with grommet

Technical specifications

Ampere	16 A
Poles	2 p
Voltage	40-50 V
Clock position	12 h
Hertz	50-60 Hz
Connection technology	Screw terminals
Contact	standard
Protection type	IP 44
Weight	186 g
Declaration of Conformity	EAC, CQC

Drawing



Drawing 3 MB 37	Amp. Poles	16		32	
		2	3	2	3
Dim. in mm	a	144	144	144	144
	b	55	55	55	55
	h	67	67	67	67
	m	122	122	122	122
	y	25	25	25	25
	z	9	9	9	9
Terminal for cond. cross section (mm ²) min.-max.		4	4	4	4
		—10	—10	—10	—10