

Wall mounted socket

Part no. 7102

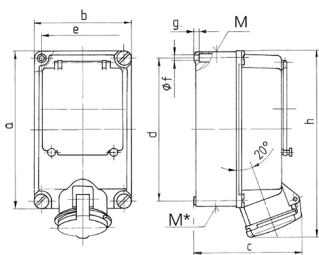


- screw terminals
- **X-CONTACT**
- with DIN rail, optional fitting of Neozed, Diazed, circuit-breakers and RCD's

Technical specifications

Ampere	63 A
Poles	5 p
Voltage	400 V
Clock position	6 h
Hertz	50-60 Hz
Connection technology	Screw terminals
Contact	X-CONTACT®
Protection type	IP 44
Enclosure material	Plastic
Weight	2114 g
Declaration of Conformity	EAC, CQC

Drawing



Drawing	Amp.	63	
1 MB 379	Poles	4	5
Dim. in mm	a	264	264
	b	163	163
	c	187	187
	d	240	240
	e	140	140
	f	8.1	8.1
	g	8	8
	h	315	315
	M	1x40	1x40
	M*	2x40	2x40
Max. cable diam. (mm)		27	27