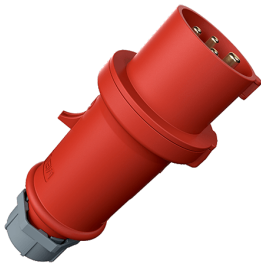


## Plug StarTOP® with SafeCONTACT

Part no. 719



- screwless, with insulating displacing technique
- cable gland and sealing
- strain relief and protection against kinking
- enclosure with thread lock and safety slide

### Technical specifications

Ampere	32 A
Poles	4 p
Voltage	400 V
Clock position	6 h
Hertz	50-60 Hz
Connection technology	Screwless - SafeCONTACT
Contact	standard
Protection type	IP 44
Weight	298 g
Declaration of Conformity	VDE, EAC, CQC

### Drawing



Drawing 2 MB 214	Amp. Poles	16			32		
		3	4	5	3	4	5
Dim. in mm	a	148	160	160	197	197	197
	b	55	65.6	65.6	75	75	75
	h	61	72.5	72.5	80.5	80.5	85
	n	112	123.5	123.5	152	152	152
	y	14.5	16	16	22	22	22
Terminal for cond. cross		1	1	1	2.5	2.5	2.5
section (mm <sup>2</sup> ) min.-max.		-2.5	-2.5	-2.5	-6	-6	-6