

Wall mounted socket
Part no. 7295

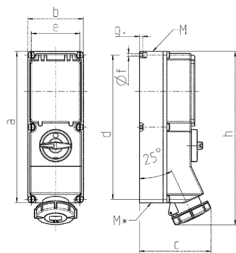


- screw terminals
- **X-CONTACT**
- **highly resistant to chemicals**
- highly heat resistant contact carrier
- nickel plated contacts
- switched
- mechanical DUO-interlock
- DIN-rail
- sockets can be padlocked

Technical specifications

Ampere	63 A
Poles	4 p
Voltage	400 V
Clock position	6 h
Hertz	50-60 Hz
Connection technology	Screw terminals
Contact	X-CONTACT®
Protection type	IP 67
Enclosure material	Plastic, high resistance to chemicals
Weight	4112 g
Declaration of Conformity	EAC, CQC

Drawing



Drawing	Amp.	16			32		63		
		Poles			Poles		Poles		
1 MB 181/620		3	4	5	4	5	4	5	
Dim. in mm	a	364	364	364	364	364	460	460	
	b	134	134	134	134	134	180	180	
	c	160	162	163	168	168	202	202	
	d	347	347	347	347	347	440	440	
	e	117	117	117	117	117	160	160	
	f	6.3	6.3	6.3	6.3	6.3	8.1	8.1	
	g	8	8	8	8	8	8	8	
	h	391	395	398	408	411	505	505	
	M	32/40	32/40	32/40	32/40	32/40	40	40	
	M*	2x32	2x32	2x32	2x32	2x32	2x40	2x40	
Max. cable diam. (mm)		27	27	27	27	27	27	27	
Terminal for cond. cross		1.5	1.5	1.5	2.5	2.5	6	6	
section (mm²) min.-max.		—4	—4	—4	—10	—10	—25	—25	