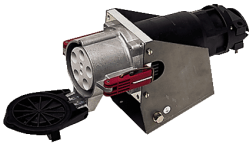


## Wall mounted socket

Part no. 75221



- screw terminals
- external fixing
- cable entry at top
- with cable gland
- seawater resistant products are available on request
- if required, pilot cables can be introduced separately into plugs/ enclosures, please add „PK“ to the part number

## Technical specifications

Ampere	200 A
Poles	4 p
Voltage	400 V
Clock position	6 h
Hertz	50-60 Hz
Connection technology	Screw terminals
Contact	standard
Protection type	IP 67
Weight	6640 g
Declaration of Conformity	EAC

## Drawing

