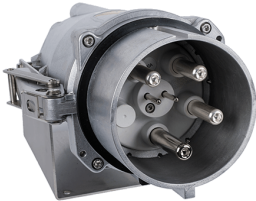


## Inlet

Part no. 75389



- screw terminals
- with cable gland
- seawater resistant products are available on request

## Technical specifications

Ampere	400 A
Poles	4 p
Voltage	400 V
Clock position	6 h
Hertz	50-60 Hz
Connection technology	Screw terminals
Contact	standard
Protection type	IP 67
Weight	10560 g
Declaration of Conformity	EAC

## Drawing

