

Wall mounted inlet

Part no. 800

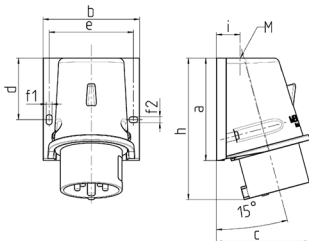


- screw terminals
- for external fixing
- for hinged lids for retrofitting see accessories

Technical specifications

| | |
|---------------------------|-----------------|
| Ampere | 16 A |
| Poles | 4 p |
| Voltage | 400 V |
| Clock position | 6 h |
| Hertz | 50-60 Hz |
| Connection technology | Screw terminals |
| Contact | standard |
| Protection type | IP 44 |
| Weight | 201 g |
| Declaration of Conformity | VDE, EAC |

Drawing



| Drawing Z MB 221 | Amp. Poles | 16 | | 32 | | |
|---------------------|---------------|--------|--------|--------|--------|--------|
| | | 4 | 5 | 3 | 4 | 5 |
| Dim. in mm | a | 92.5 | 92.5 | 102 | 102 | 102 |
| | b | 87 | 87 | 94 | 94 | 94 |
| | c | 84.5 | 84.5 | 94 | 94 | 94 |
| | d | 55.5 | 55.5 | 62 | 62 | 62 |
| | e | 76 | 76 | 84 | 84 | 84 |
| | f1 | 5.3 | 5.3 | 5.3 | 5.3 | 5.3 |
| | f2 | 5.3 | 5.3 | 5.3 | 5.3 | 5.3 |
| | h | 128 | 128 | 146 | 146 | 146 |
| | i | 21.5 | 21.5 | 26 | 26 | 26 |
| | M | 25x1.5 | 25x1.5 | 25x1.5 | 25x1.5 | 32x1.5 |