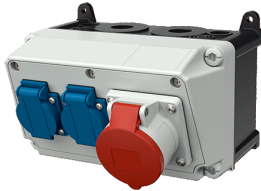


AMAXX® combination unit

Part no. 910694

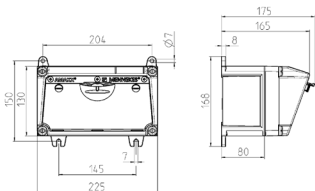


- pre-wired for installation
- enclosure and insert made of AMAPLAST

Technical specifications

CEE 16 A, 5 p, 400 V	1
British standard	2
Connection / feeder cable	• for 1 cable up to 5 x 6 mm ²
Protection type	IP 44
Shutter	false
Enclosure material	Plastic
Weight	1490 g
Height	130 mm
Width	225 mm

Drawing



Drawing 1 MB 531

Depth dimensions at various fittings.

Receptacles	Degrees	Depth
SCHUKO® 16A, 230 V	IP 44	175 mm
	IP 67	194 mm
CEE 16A, 3p, 230V	IP 44	204 mm
	IP 67	205 mm
CEE 16A, 5p, 400V	IP 44	209 mm
	IP 67	213 mm
CEE 32A, 5p, 400V	IP 44	221 mm
	IP 67	227 mm
CEE 63A, 5p, 400V	IP 44	248 mm
	IP 67	248 mm

Cable entries: closed for cut out. 2 x M 25 each on top and bottom, 2 x M 20 each on top and bottom for cut out.