

Wall mounted socket
Part no. 7233

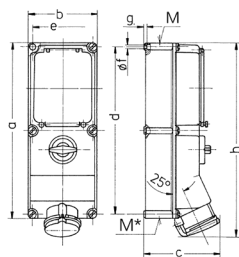


- screw terminals
- switched
- mechanical DUO-interlock
- circuit breaker, K-characteristics and RCD (0.03 A)
- other leakage current ratings on request
- sockets can be padlocked

Technical specifications

Ampere	32 A
Poles	5 p
Voltage	400 V
Clock position	6 h
Hertz	50-60 Hz
Connection technology	Screw terminals
Contact	standard
Protection type	IP44
Enclosure material	Plastic
Weight	2812 g
Declaration of Conformity	EAC

Drawing



Drawing 1 MB 208	Amp. Poles	16			32		63	
		3	4	5	4	5	4	5
Dim. in mm	a	364	364	364	364	364	460	460
	b	134	134	134	134	134	180	180
	c	160	162	163	168	168	195	195
	d	347	347	347	347	347	440	440
	e	117	117	117	117	117	160	160
	f	6.3	6.3	6.3	6.3	6.3	8.1	8.1
	g	8	8	8	8	8	8	8
	h	391	395	398	408	411	502	502
	M	32/40	32/40	32/40	32/40	32/40	40	40
	M*	2x32	2x32	2x32	2x32	2x32	2x40	2x40
	Max. cable diam. (mm)	27	27	27	27	27	27	27
	Terminal for cond. cross	1.5	1.5	1.5	2.5	2.5	6	6
	section (mm²) min.-max.	—4	—4	—4	—10	—10	—25	—25