

Panel mounted socket

Part no. 3641

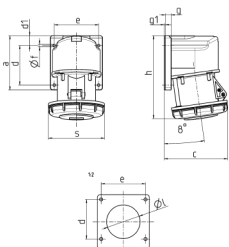


- screw terminals
- **X-CONTACT®**
- frame terminals
- angled 80°
- partially assembled

Technical specifications

| | |
|-----------------------|-----------------|
| Ampere | 63 A |
| Poles | 5 p |
| Voltage | 400 V |
| Clock position | 6 h |
| Hertz | 50-60 Hz |
| Connection technology | Screw terminals |
| Contact | X-CONTACT |
| Protection type | IP67 |
| Flange | 110x106 mm |
| Fixing hole | 80x90 mm |
| Inclination | 80 ° |
| Weight | 796 g |

Drawing



| Drawing | Amp. | 63 |
|------------|-------|-----|
| 1 MB 561 | Poles | 5 |
| Dim. in mm | a | 110 |
| | b | 106 |
| | c | 129 |
| | d | 80 |
| | d1 | 20 |
| | e | 90 |
| | f | 5.5 |
| | g | 12 |
| | g1 | 2 |
| | h | 168 |
| | l | 68 |
| | s | 118 |