

Wall mounted socket

Part no. 75126

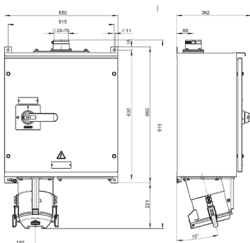


- Screw terminals
- switched
- mechanical interlock
- cable entry bushing for cables of 20 mm up to 70 mm at top and blind flange at bottom
- enclosure made of sheet steel, painted in RAL 1021
- external fixing
- seawater resistant products are available on request

Technical specifications

Ampere	400 A
Poles	5 p
Voltage	400 V
Clock position	6 h
Hertz	50-60 Hz
Connection technology	Screw terminals
Contact	standard
Protection type	IP55
Weight	47000 g

Drawing



Drawing
1 MB 403/2
Dim. in mm