

Panel mounted socket

Part no. 2212

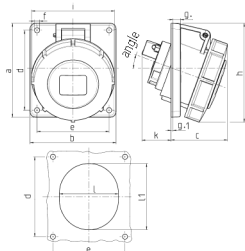


- screw terminals
- highly heat resistant contact carrier
- nickel plated contacts
- 20° inclination

Technical specifications

Ampere	32 A
Poles	7 p
Voltage	500 V
Clock position	7 h
Hertz	50-60 Hz
Connection technology	Screw terminals
Contact	highly heat resistant contact carrier, nickel plated contacts
Protection type	IP67
Flange	100x92 mm
Fixing hole	85x77 mm
Inclination	20 °
Weight	372 g

Drawing



Drawing	Amp.	16	32
1 MB 251	Poles	7	7
Dim. in mm	a	100	100
	b	92	92
	c	62	66
	d	85	85
	e	77	77
	f	5,5	5,5
	g	8	8
	g1	2	2
	h	105	113
	i	96	110
	k	39	54
	l	65	72
	ll	72	85
	o	20°	20°
Terminal for cond. cross section (mm²) min.-max.		1,5 —4	2,5 —10