

Panel mounted socket

Part no. 3215

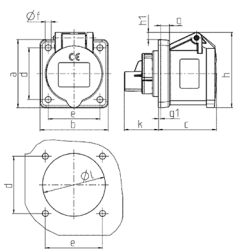


- screw terminals straight

Technical specifications

Ampere	16 A
Poles	3 p
Voltage	50-250 V
Clock position	3 h
Connection technology	Screw terminals
Contact	standard
Protection type	IP44
Flange	62x62 mm
Fixing hole	47x47 mm
Weight	127 g
Certifications	VDE

Drawing



Drawing 1 MB 259	Amp. Poles	16		
		3	4	5
Dim. in mm	a	62	72	72
	b	62	65	65
	c	54	54	54
	d	47	52	52
	e	47	52	52
	f	5,5	5,5	5,5
	g	8	8	8
	g1	2	2	2
	h	68	77	85
	h1	7	7	11
	k	32	32	32
	l	50	52	57
Terminal for cond. cross section (mm ²) min.-max.		1,5	1,5	1,5
		-4	-4	-4