

Panel mounted socket TM

Part no. 24740

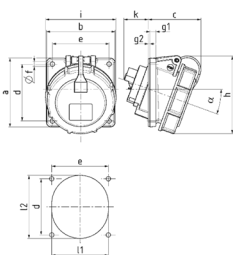


- screw terminals
- highly heat resistant contact carrier
- nickel plated contacts
- 20° inclination
- (form BS)

Technical specifications

Ampere	32 A
Poles	5 p
Voltage	400 V
Clock position	6 h
Hertz	50-60 Hz
Connection technology	Screw terminals
Contact	highly heat resistant contact carrier, nickel plated contacts
Protection type	IP67
Flange	85x85 mm
Fixing hole	70x70 mm
Inclination	20 °
Weight	340 g

Drawing



Drawing 1MB474 Dim. in mm	Amp. Pole	16		32		63
		3	5	3	5	3/4/5
a		85	85	85	85	114
b		85	85	85	85	114
c		66	65	67	78	98
d		70	70	70	70	90
e		70	70	70	70	90
f		5.5	5.5	5.5	5.5	6.5
g		8	8	8	8	12
g.1		2	2	2	2	2
h		89	97	101	108	135
i		70	87	94	101	113
k		40	35	54	43	62
I min.		57	70	78	78	92
I max.		78	78	78	78	105
α		20	20	20	20	15
Terminal for cond. cross section (mm²) min.-max.		1.5	1.5	2.5	2.5	6
		-4	-4	-10	-10	-25