

Cepex panel mounted socket SCHUKO®

Part no. 4977

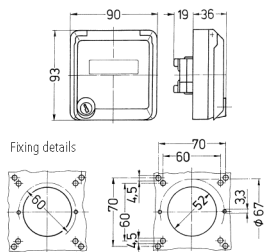


- alpine white or pearl white
- screw terminals
- with labelling field
- with safety lock
- two keys
- cannot be dismantled when locked
- on request with identical lock
- suitable for installation in cable ducts and columns

Technical specifications

Ampere	16 A
Poles	2 p+PE
Voltage	230 V
Hertz	60-50 Hz
Protection type	IP44
Shutter	false
Weight	167 g

Drawing



Drawing
1 MB 305
Dim. in mm